

2012

# How To Remove Sun film from your car

A step by step guide



# ZIMBLY CARS

## **It is up to you – do you want to spend money or do you like to DIY?**

If you answered the first – all the best with your neighborhood accessory shop. Just don't stay and watch!

If you want to DIY here are the steps to remove the sun film from your car. It is not difficult to do – just make sure you have what is required and follow the instructions. Apologies in advance - I cannot help you if you damage yourself/your cars glass/car by refusing to follow instructions.

### **Required Items:**

- Newspaper or misc cloth for soaking up spills/run of water
- Soft cloth for drying and wiping the windows
- Spray bottle, water, window cleaning spray
- Thin bladed knife/ paper/ craft cutter /razor blade
- A bucket or trash bin to dump the removed sun film

**Time required:** 1 hr plus for a good job - make sure you are not in a rush. Ripping the film takes 20 minutes – however if you take care and follow the instructions you can remove the glue residue as well while doing the film removal. Glue residue removal when done later can take over 2-3 hours!

**Location:** Ideally outdoors where you have good ventilation/can keep all doors open and can easily see any leftover bits of sun film/glue.

### **Caution:**

- If your car auto-locks the doors - please make sure you keep the doors open all the while/always keep the keys in your pocket.
- Also make sure the roof dome lights/map lights are off - don't run down your battery.
- Avoid using strong solvents/chemicals - if you are - make sure you do not inhale them for long /always keep the doors open
- While using sharp blades/knives - keep children safely out of reach of this and also take care with using them and while placing them on upholstery etc - cuts and nicks happen very easily
- Do not use abrasives/rough scrubbers to clean the glue off the glass - once scratched nothing can be done.

### **Order of Attack:**

I recommend starting with the rear window and then the rear doors windows and finally the front doors and the front windshield (if required) the last.

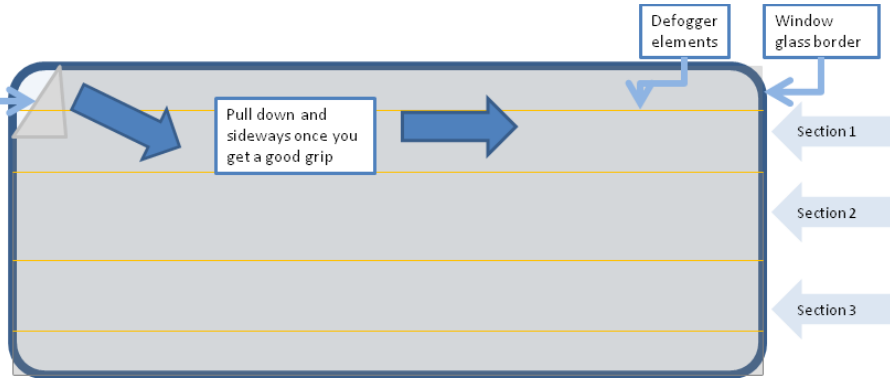
### **Rear Windshield (With / Without Defogger):**

- Place newspaper/cloth under the rear glass (for a sedan/ in the luggage/boot area for a hatchback/SUV that opens upwards.
- For cars with defoggers the rear glass will have two or more sections. Repeat the same process for each section.

# ZIMBLY CARS

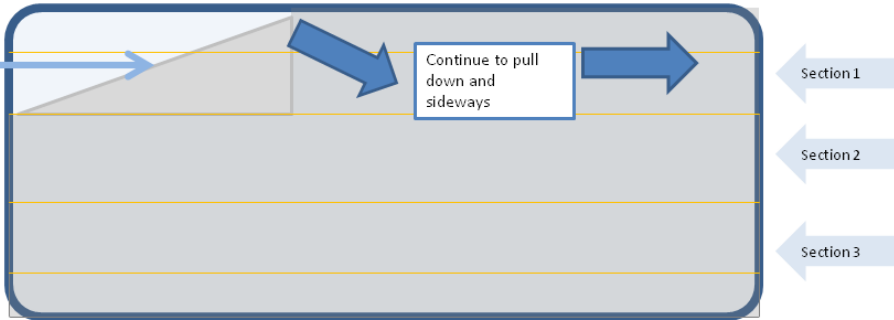
1

Find the corner and pull down a bit. Spray water into the gap of the film and glass. Let it soak a bit. Find the edge & pull down a bit. Spray water into the gap between film and glass. Keep doing this for 1 cm increments



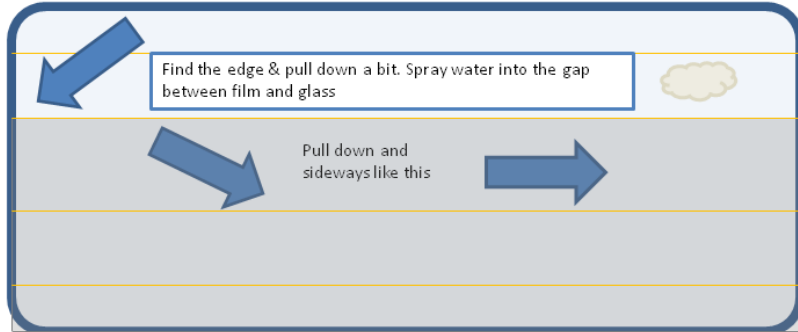
2

Keep spraying water into the gap of the film and glass.



3

Repeat the same approach for second and third sections below. (In this first section is already removed.)



4



# ZIMBLY CARS

Keep pausing and spraying water - this is essential to soften up any glue that's there between the film and glass to make the removal easier. If you rip away the film without using water, the remnants of the glue will dry up and leave unsightly marks that will be a pain to clean up.

If the film tears into sections- make sure you slow down and use a knife to get under the film where it is stuck on the side closer to the middle and spray water there and repeat the same process. Try to pull the film slowly bit by bit till you get a large section together.

## Side windows:

1



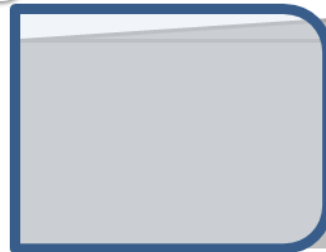
Lower the glass about an inch

2



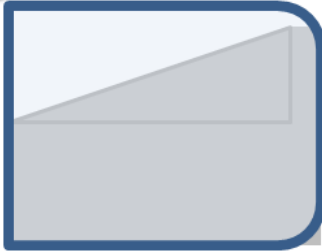
Open up the corner using fingernails/blade. Spray water into the gap.

3



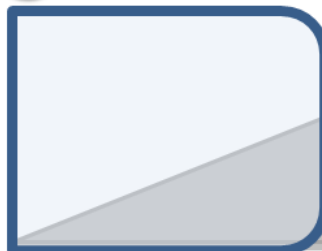
Raise the glass fully once you have the top area free

4



Keep spraying water into the gap, pausing and then pulling

5



Keep spraying water into the gap, pausing and then pulling till it all comes off

6



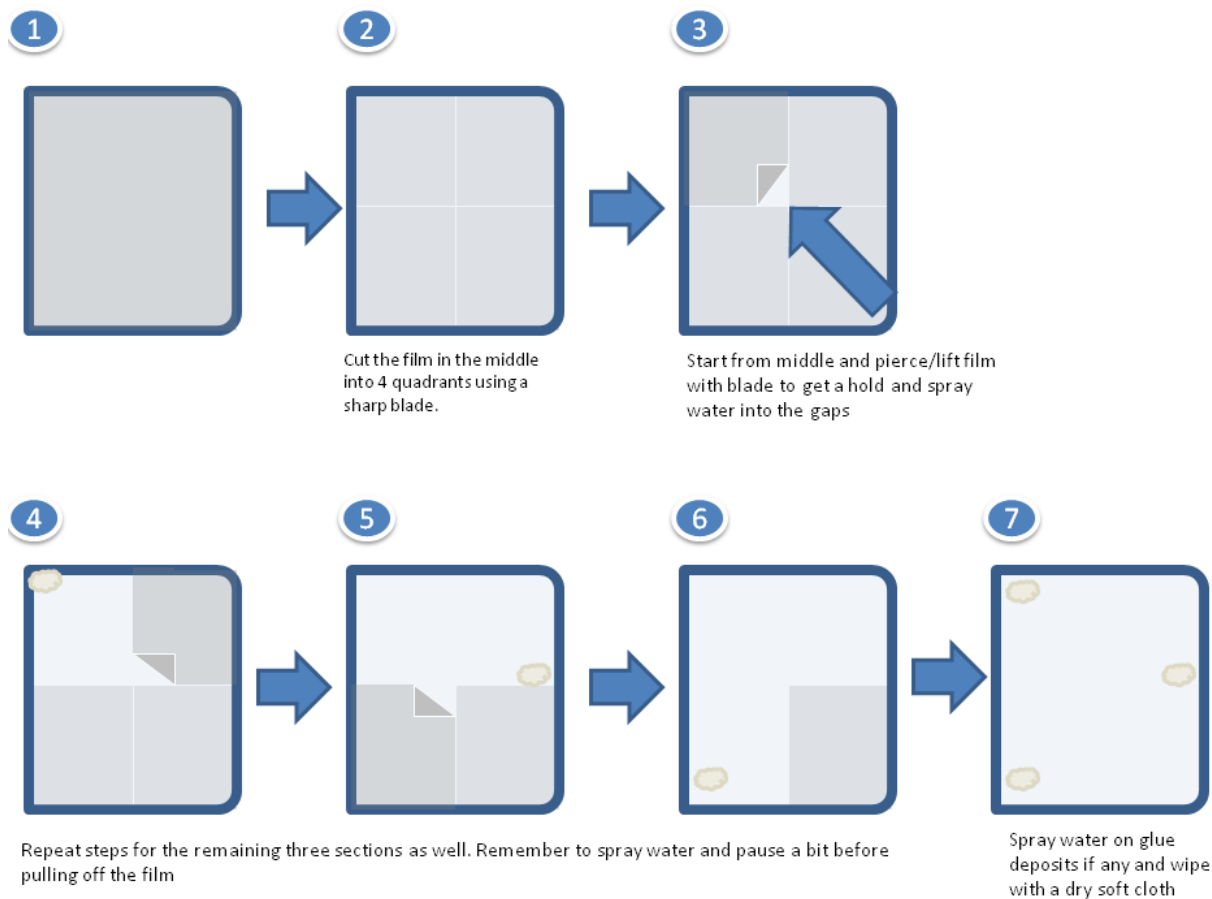
Spray water if glue deposits still remain and wipe with a dry cloth

Roll up the glass fully as soon as the initial hand grip is obtained on the film - the glass may crack/get misaligned if partially open and too much of force is used to rip sun film. You need the glass fully raised to be able to remove the bottom portion that extends into the door.

## Quarter Glass:

If your car has a quarter glass for either the front or rear door that doesn't slide up/down and has sun film on it - how do you get an edge for this? You cannot - so just be bold and make a vertical cut with the blade right down the middle of the glass from top to bottom and then make a horizontal cut from left to right in the middle.

# ZIMBLY CARS



## Front windshield:

If you have just a strip on the top of the front windshield - you don't need to remove it and can let it be (I have left it).

If you have the whole windshield covered and want to remove it - follow similar instructions as used for the rear windshield. Just take extra care that water sprayed is totally soaked up by covering the entire dashboard with cloth. Any leakage could result in issues with dashboard electronics or in the worst case with your ECU!

## Final Check:

Look from the outside of the door to check if there are any visible bits of sun film seen. Use the thin blade to reach and remove the stubborn bits :-).

Look for glue deposits from outside the car - they may be easier to spot like this. Do a once over again with the soft cloth.

# ZIMBLY CARS

## **Troubleshooting:**

**Film is ripping into shreds at the corner you started** - not allowing you enough grip to rip out the film in one piece. Poor quality sun film may be the cause- you may want to ditch the DIY and pay some atrocious money to get it removed by a professional. You are not wetting the sun film enough/going too fast - pause and work slowly. Try another corner.

## **Glue deposits on glass:**

Start with water and progress to stronger stuff. Try Mr. Muscle, Colin, Surf in water, hair shampoo, Amway products etc. Take care with solvents/paint thinners as they could overpower you with the smell if the doors are closed and there isn't much ventilation. Drops of these on paint will remove the glossy clear coat layer leaving the paint dull and dry Smoking while doing this should be a strict no-no.

**The film has ripped near the door beading:** Gently try and reach it with a knife etc that can slip into the space available - slowly and gently work out the stuck piece. Worst case remove the door panels and then attack it from inside!

*Hope you found these steps and tips useful. If you have any suggestions for improving this "How To" please reach Zimbly Cars here: <http://cars.zimbly.com/contact-carszimbly/>*